

**RUSH  
WITT &  
WILSON**



**5 Quebec Close, Bexhill-On-Sea, East Sussex TN39 4HX  
£340,000**

**Rush, Witt and Wilson are delighted to welcome to the market this exceptionally well presented three bedroom semi-detached house ideally located in this quiet and secluded cul-de-sac location. Having been modernised by the current vendors to a high standard throughout, the property comprises a modern open plan living space with modern fitted kitchen and lounge/diner, large utility room, three bedrooms, family bathroom, separate wc and additional ground floor wc. Other internal benefits include gas central heating to radiators, and double glazed windows throughout. Externally the property boasts private and secluded rear garden, small front garden, driveway providing off road parking leading to garage/storage space. Conveniently situated within easy access to Bexhill downs, local schools and amenities viewing comes highly recommended by RWW Bexhill to appreciate this stunning family home in this ideal location.**



### **Porch**

Double glazed front door leading to entrance porch, with double glazed windows to the side elevation, obscured glass panelled internal door leading through to hallway.

### **Hallway**

Radiator, stairs leading to first floor.

### **Kitchen**

11'2" x 7'9" (3.41 x 2.37)

Double glazed window to the front elevation, modern fitted white gloss kitchen with a range of matching base level and tall units with solid wood worktop surfaces, ceramic bowl and half sink with drainer and mixer tap, work top mounted induction hob with fitted stainless steel extractor hood above, integrated electric oven, integrated dishwasher, integrated under-counter fridge, part tiled walls, recessed ceiling spotlights. The kitchen is open plan leading on to the lounge/diner.

### **Lounge/Diner**

20'1" x 10'11" (6.14 x 3.34)

Double glazed windows and set of double glazed French doors to the rear elevation giving access to the rear garden, radiator.

### **Utility Room**

10'7" x 8'4" (3.25 x 2.55)

Double glazed windows to the side elevation, radiator, fitted matching wall and base level units with solid wood worktop surfaces, composite single sink with drainer and mixer tap, space for freestanding fridge/freezer, plumbing space for washing machine, additional space for tumble dryer, wall mounted gas central heating boiler, three large built in storage cupboards with a range of hanging space and shelving, with one housing the gas meter, part tiled walls, recessed ceiling spotlights.

### **Ground Floor WC**

Radiator, low level wc, wall mounted wash hand basin with tiled splash-back, tiled floor.

### **First Floor Landing**

Stairs leading to first floor, on the half landing there is a double glazed window to the side elevation, first floor landing has access to loft space.

### **Bedroom One**

10'10" x 10'10" (3.32 x 3.32)

Double glazed window to the rear elevation, radiator.

### **Bedroom Two**

14'2" x 8'11" (4.34 x 2.72)

Double glazed window to the rear elevation, radiator, large bespoke fitted wardrobes with hanging space and shelving.

### **Bedroom Three**

8'11" x 8'0" (2.72 x 2.45)

Double glazed window to the front elevation, radiator, large bespoke fitted wardrobes with hanging space and shelving.

### **Family Bathroom**

Obscured double glazed window to the front elevation, heated chrome towel rail, white bathroom suite comprising panelled enclosed bath with mixer tap, wall mounted electric power shower and shower attachment, vanity unit with wash hand basin, mixer tap and storage cupboard beneath, large built in storage cupboard with slatted shelving, fully tiled walls and floor.

### **Separate WC**

Obscured double glazed window to the front elevation, low level wc, radiator, fully tiled walls and floor.

### **Outside**

#### **Rear Garden**

Private and secluded southerly facing rear garden with blocked paved patio area, the rest of the garden is mainly laid to lawn, the blocked paved patio continues as a path down the side of the property with gated access leading to the front.

#### **Front Garden**

Driveway providing off road parking, small front garden that is mainly laid to lawn.

#### **Garage/Storage Room**

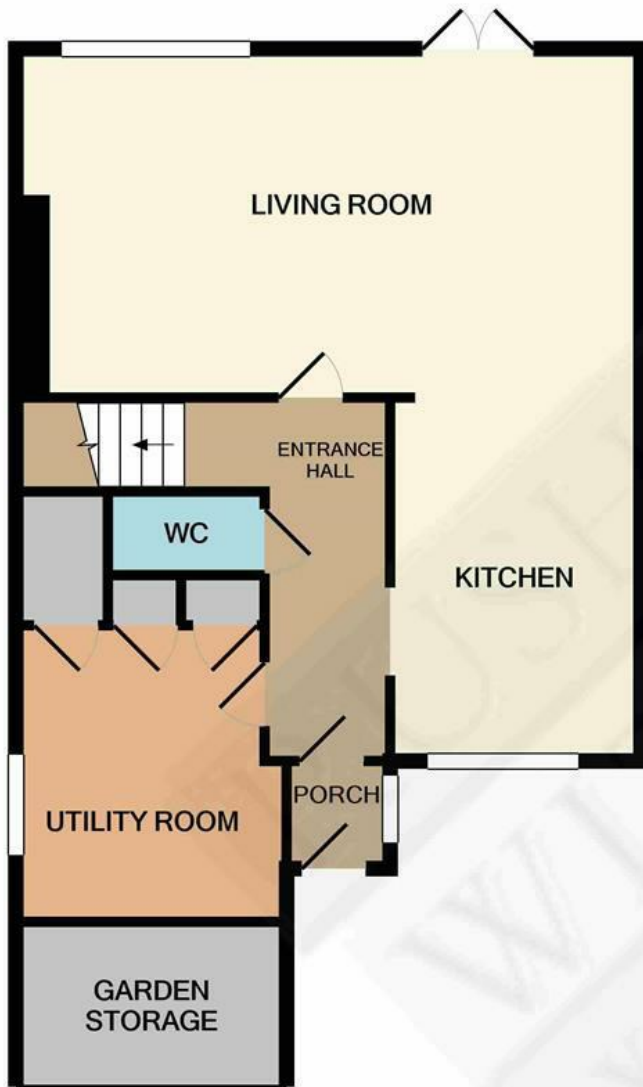
With up and over door, providing storage space, some of the space from the garage has been converted to create the utility room.

#### **Agents Note**

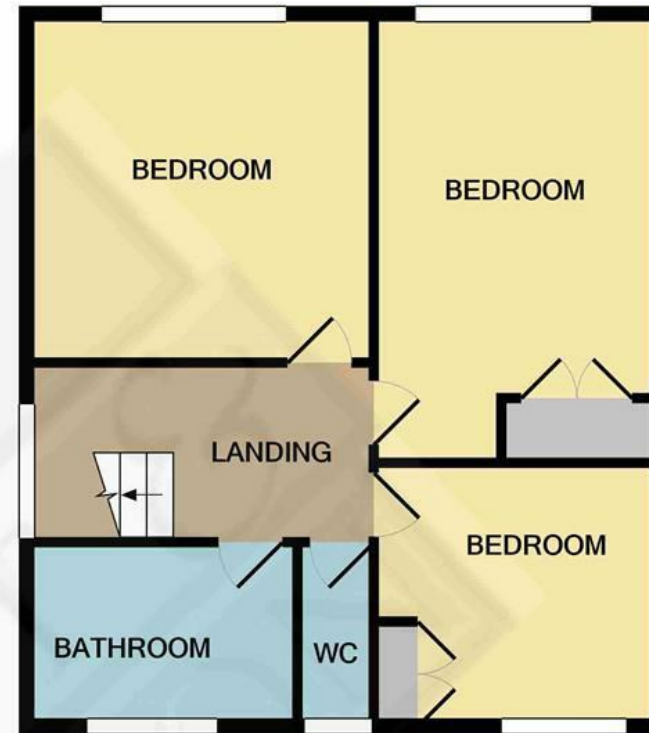
None of the services or appliances mentioned in these sale particulars have been tested. It should also be noted that

measurements quoted are given for guidance only and are approximate and should not be relied upon for any other purpose.





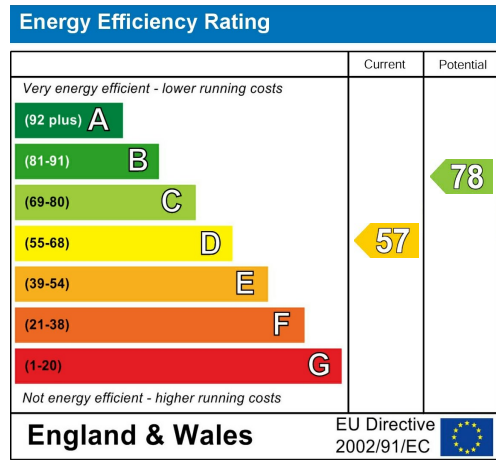
GROUND FLOOR  
APPROX. FLOOR  
AREA 530 SQ.FT.  
(49.3 SQ.M.)



1ST FLOOR  
APPROX. FLOOR  
AREA 443 SQ.FT.  
(41.2 SQ.M.)

TOTAL APPROX. FLOOR AREA 974 SQ.FT. (90.4 SQ.M.)

Whilst every attempt has been made to ensure the accuracy of the floor plan contained here, measurements of doors, windows, rooms and any other items are approximate and no responsibility is taken for any error, omission, or mis-statement. This plan is for illustrative purposes only and should be used as such by any prospective purchaser. The services, systems and appliances shown have not been tested and no guarantee as to their operability or efficiency can be given



**Residential Estate Agents  
Lettings & Property Management**



**3 Devonshire Road  
Bexhill-on-Sea  
East Sussex  
TN40 1AH  
Tel: 01424 225588  
bexhill@rushwittwilson.co.uk  
www.rushwittwilson.co.uk**